

Stack-On Display, seeing everything

An Axis Education Article

When you first open the R2W Axis, it will quickly become apparent that we have literally jammed so much information into the program that it has to 'give' somewhere. The use, study and display of Form, Today's races, Past races, Key races, Professional Functions, Black Book, Systems (selection finder) and Analysis, Consensus panel and Data and the Administration area all fold into a small space.

Obviously we use Tabs to separate the different areas allowing us to retain a small footprint and to show these different modules. That is not the breakthrough of the Stack-On Display architecture, as nearly everyone uses tabs. The use of Tabs however can't accomplish everything!

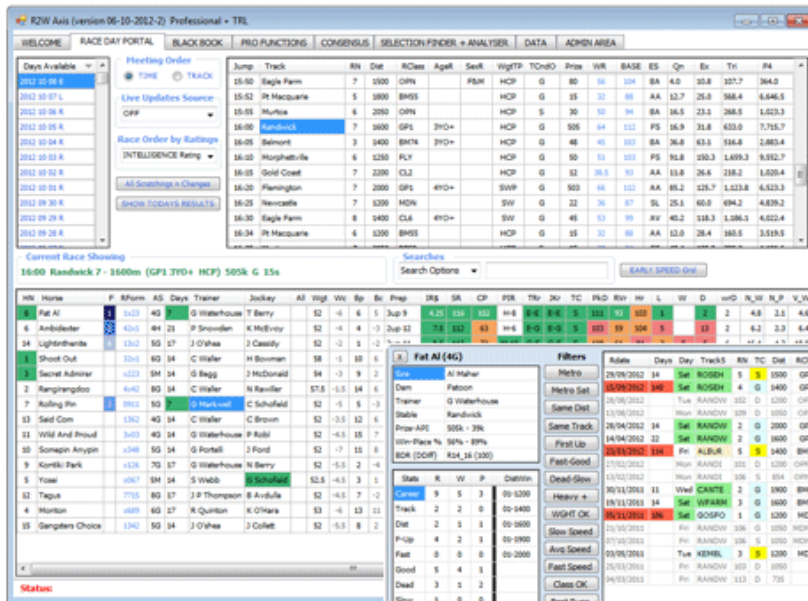
R2W Axis Stack-On Display Program Architecture

R2W Axis is different to other programs in its display of information that is relevant to a specific task where we Stack-On one group of information over another whilst intuitively preserving the logical display of what you need to see. It may seem both logical and simple once you know how it works but importantly it breaks and eliminates the dogmatic 'one window view per function' you find in most other programs. The intelligence behind this is to not waste space showing a user something he/she has no need for at that time. Let us give you a few examples of what we mean.

Race Day Portal: Let's assume that you are in the Race Day Portal looking at a race. You have the Days Races in the top grid and the horses in that race and their details in the grid below. You can see both simultaneously and can move between races and view the horses. What happens when you want to see a particular horses past form? In the Axis you click on the horses form column and their past form will Stack-On over the Race Grid, allowing you to see the form as well as the race field detail. You can also move from horse to horse in the race displaying the past form for each horse whilst preserving the race/field and ratings view of all runners. When you are ready to move to the next race, just collapse the Stack with a single click and you are instantly able to see all the days races that were covered previously by past horse form. Now you can move to the next race. It is logical that when you are looking at past form you have no need to see all today's races, but you do wish to see all the horses in the race that you are currently viewing.

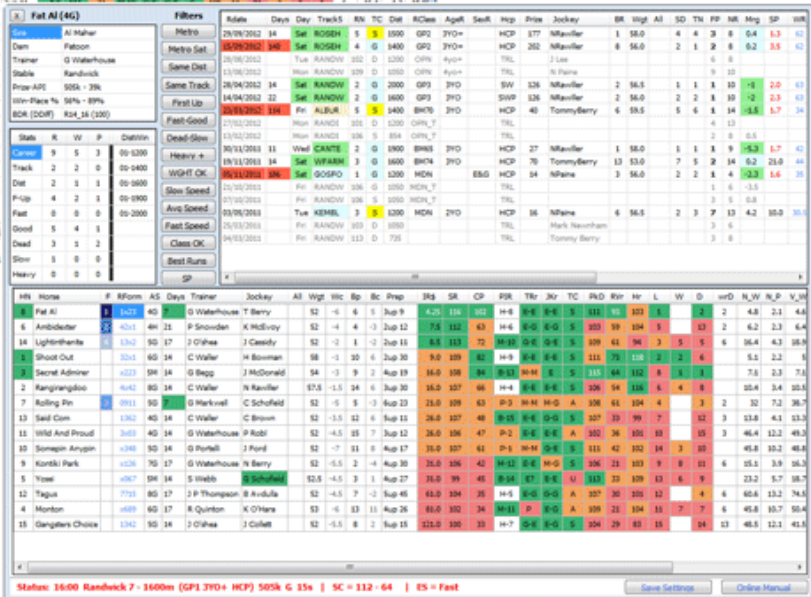
Analysis Display: After you perform Analysis on a system you are presented with the results of over 95 individual factors with each of their elements. As you scroll down through the detailed information, you may like to use the "Quick Links" which give you a list of all the factors so that you can navigate easily to the desired one. The window that presents quick links, Stacks-On over the area that shows the list of systems, utilising this space currently not required by the user. Once you are finished with the Analysis, simply close the Quick links window and you are ready once more to navigate your systems list.

Race Day Portal with past starts stacked over race grid



Race View showing Races in top grid, horses in bottom grid.

Same race with past starts stacked over the race grid. Note all horses still visible in the horse grid.



The Stack-On Architecture is used across all modules within the software where it is appropriate that the user see additional information whilst retaining an intuitive workflow that utilises only current and task specific information. As a result your work flows more easily and faster without having to changing screens as you would in other racing software programs. The program is designed to fit a 1024x768 minimum resolution by default, but can also be adjusted to fit larger screen sizes.